

CHCNAV

BB4

**MULTIROTOR
UAV SOLUTION**



**MAPPING
& GEOSPATIAL**

PROFESSIONAL UAV REALITY CAPTURE PLATFORM

BB4 is a high-end unmanned aircraft system resulting from an alliance between the two industry leaders in their respective segments. Its scientific design and highly integrated production technology come from CHCNAV - a global manufacturer specialized in efficient geospatial measurement technologies - and its fully automated flight control system from DJI, the pioneer in the manufacturing of commercial UAVs.

STATE-OF-THE-ART PLATFORM

2 min for flight preparation.

BB4 UAV is specially designed for professional industrial applications. The modular design with pre-installed arms and antennas reduces the time required for setup, making the platform ready for use in just 2 minutes. Thanks to its structure, little space is required for BB4 take-offs and landings.

SUPERIOR FLYING PERFORMANCE

Extended survey coverage capacity.

BB4 offers up to 55 minutes of flight time with a 1 kg payload and up to 40 minutes with a 5 kg payload, providing users with the ability to install a high-performance LiDAR and survey large areas in a single flight mission.

LONG RANGE OPERATION

Operating range up to 5 km.

The BB4s use the DJI Lightbridge 2 flight controller with an operating range of 5 km. The integrated controller and advanced algorithms set a new standard for wireless HD image transmission by reducing latency and increasing maximum range and reliability.

HIGH CAPACITY

Up to 7 kg payload.

Due to its large capacity of up to 7 kg, the BB4 can be configured according to your mission needs. To generate an accurate 3D point cloud, the BB4 can carry CHCNAV scanners with DSRL cameras. 3D photogrammetry is also possible with an oblique camera system. For inspection and agriculture, users can use multi-spectral cameras.

INTELLIGENT, SIMPLIFIED FLIGHT SOFTWARE

Operated by DJI Ground Station Pro.

Enhance the BB4's operation with the DJI Ground Station Pro (DJI GS Pro), an iPad App. Perform automated flight missions, manage flight data in the cloud, and collaborate between projects to efficiently manage your drone workflow.

SURVEY-GRADE ACCURACY

Integrated GNSS RTK + IMU.

The BB4 integrates dual DJI A3 IMUs and GNSS units that work together with CHCNAV's advanced positioning solution, consisting of a high-end GNSS receiver and an industry leading IMU to meet the high accuracy requirements of the surveying and mapping industry.

 **EFFICIENT
DATA CAPTURE**



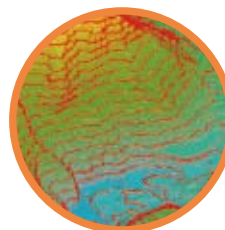
**Topographic
survey**



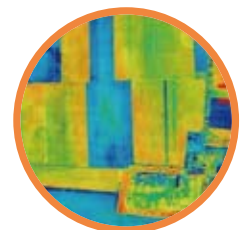
Construction



**Asset
inspections**



Mining



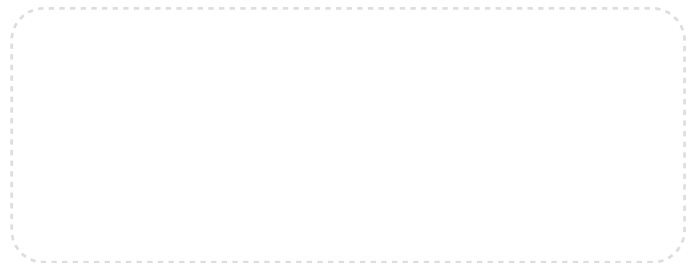
**Natural
resources**

SPECIFICATIONS

General system performance	
Type	Quadcopter with 4 propellers
Structure	Carbon fiber, quickly release design
Assembly time	Start ≤ 2 min / finish ≤ 2 min
Empty weight	20.9 kg (incl. 9.7 kg batteries)
Max. payload	7.1 kg
Max. takeoff weight	28.0 kg
Dimensions of instrument	110.0 × 110.0 × 44.0 cm 43.3" × 43.3" × 17.32"
Transport container	Water, dust and quakeproof
Dimensions of unit in container	94.0 × 64.0 × 50.0 cm 37.0" × 25.2" × 19.7"
Flight control system	Dual DJI A3
Remote control SW	DJI GS PRO
Operating temperature	-10 °C to +40 °C
Control system	Dual-frequency GNSS navigation, dual redundancy sensor design, fully-automatic work mode
Hovering accuracy	1 cm + 1 ppm Hz 2 cm + 1 ppm V
Auto-flight mode	Pre-design air route, flight height change
Flight performance	
Max. flight altitude MAMSL	5000 m
Flight time ⁽¹⁾	55 min with 1 kg payload 40 min with 5 kg payload
Max. speed	14 m/sec
Max. ascent speed	5 m/sec
Max. descent speed	3 m/sec
Max. wind resistance	13.9 m/sec (level 6)
Takeoff type	Automated takeoff and landing

Remote controller	
Operating frequency	5.725 GHz to 5.825 GHz; 2.400 GHz to 2.483 GHz
Max. transmission distance	Specialized UAV frequency, anti-disturb feature, radius 7 km
Video output port	HDMI, SDI, USB
Operating temperature	-10 °C to +40 °C
Battery	6000 mAh LiPo 2S
Electrical	
Standard battery	4x Li-Polymer batteries, 22000 mAh
Voltage	22.2 V
Energy	501.6 Wh
Connectors	XT60 XT-60 XT60 female
Supported payload	
	CHC AS-C420 (calibrated Sony A7 RII) 7952 x 5304, 42.4 MP, 5 fps
RGB camera	CHC AS-C240 (calibrated Sony A6000) 6000 x 4000, 24.3 MP, 11 fps
	Other sensors, but request factory customisation and calibration
	CHC AlphaUniXXXseries Riegl miniVUX and VUX-1 based scanners
LiDAR	CHC ASXXXseries 3rd party LiDARS ≤7 kg weight

*All specifications are subject to change without notice.
(1) Flight time depends on operation mode, weather conditions, altitude and payload.



© 2020 Shanghai Huace Navigation Technology Ltd. All rights reserved. The CHC and CHC logo are trademarks of Shanghai Huace Navigation Technology Limited. All other trademarks are the property of their respective owners. Revision May 2020.

WWW.CHCNAV.COM | SALES@CHCNAV.COM

CHC Navigation Headquarter
Shanghai Huace Navigation Technology Ltd.
599 Gaojing Road, Building D,
Shanghai, 201702, China,
+86 21 54260273

CHC Navigation Europe
Infopark Building, Sétány 1, 1117
Budapest, Hungary
+36 20 235 8248 +36 20 5999 369
info@chcnav.eu

CHC Navigation USA LLC
16412 N 92nd Street, Suite 115,
85 260 Scottsdale, Arizona, USA,
+1 480 676 4306

CHC Navigation India
409 Trade Center, Khokhra Circle,
Maninagar East, Ahmedabad,
Gujarat, India
+91 90 99 98 08 02